



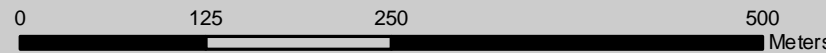
Prepared for:
Suffolk County
Department of Public Works

Prepared by:
Cashin Associates, P.C.
Cameron Engineering & Associates, LLP

Source: Aerial Map obtained from NYS High Resolution Digital Orthoimagery Program - Suffolk County dated 2001

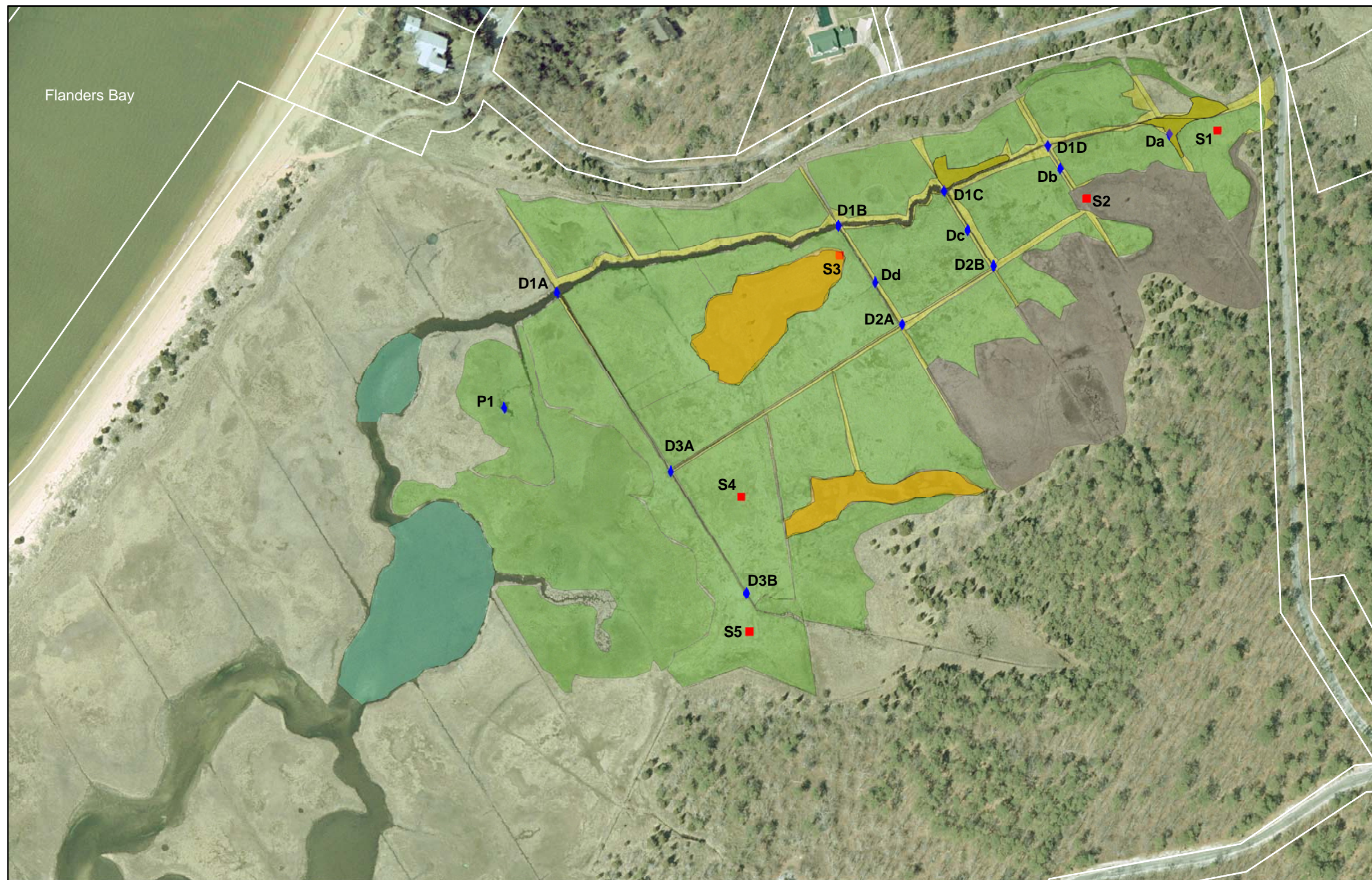
Legend

- | | | | |
|---------------------------|---------------------------------|-----------|------------------------|
| • Tidal Inundation Stakes | High Marsh | Low Marsh | Freshwater Wetlands |
| X Sampling Station | Mix High/Low Marsh | Panne | Suffolk County Tax Map |
| S Stake Label with Number | Phragmites australis | Pond | |
| D Ditch Label with Number | D Cross Ditch Label with Number | | |



Suffolk County Vector Control &
Wetlands Management Long-Term Plan
and Environmental Impact Statement

Task 7 - Priority Study Areas
John's Neck Creek Wetland
Shirley, New York
March 2005



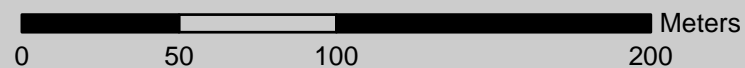
Source: Aerial Map obtained from NYS High Resolution Digital Orthoimagery Program - Suffolk County dated 2001

Prepared for:
Suffolk County
Department of Public Works

Prepared by:
Cashin Associates, P.C.
Cameron Engineering & Associates, LLP

Legend

- | | | | |
|---------------------------|---------------------------------|--------------------|--------------------------|
| ■ Tidal Inundation Stake | D Ditch Label with Number | ■ Intertidal Marsh | ■ Phragmites australis |
| S Stake Label with Number | P Pond Label with Number | ■ High Marsh | ■ Pond |
| ◆ Sampling Location | D Cross Ditch Label with Letter | ■ Upland | ■ Suffolk County Tax Map |



Suffolk County Vector Control &
Wetlands Management Long-Term Plan
and Environmental Impact Statement

Task 7 - Priority Study Areas
Hubbard Creek Wetland
Southampton, New York
May, 2005



Source: Aerial Map obtained from NYS High Resolution Digital Orthoimagery Program - Suffolk County dated 2001

Prepared for:
 Suffolk County
 Department of Public Works

Prepared by:
 Cashin Associates, P.C.
 Cameron Engineering & Associates, LLP

Legend					
■ Tidal Inundation Stake	D Ditch Label with Number	■ Low Marsh	■ Pond		
S Stake Label with Number	P Pond Label with Number	■ High Marsh	□ Suffolk County Tax Map		
◆ Sampling Station	D Cross Ditch Label with Letter	■ Phragmites australis			

Suffolk County Vector Control &
 Wetlands Management Long-Term Plan
 and Environmental Impact Statement

Task 7 - Priority Study Areas
 Havens Point Wetland
 Brookhaven, New York
 May, 2005